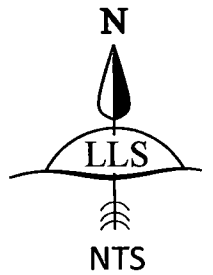


State of Wyoming Corner Record

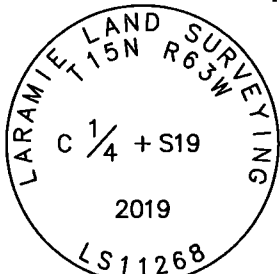
(In compliance with the **CORNER PERPETUATION AND FILING ACT**, Wyoming Statutes, 1997 Section 33-29-140 et. seq., and the Rules and Regulations of the Board of Professional Engineers and Professional Land Surveyors)

Record of original survey and citation of source of historical information (if corner is lost or obliterated). Description of corner monumentation evidence found and/or monument and accessories established to perpetuate the location of this corner. Sketch of relative location of monument, accessories, and reference points with course and distance to adjacent corner(s) (if determined in this survey).

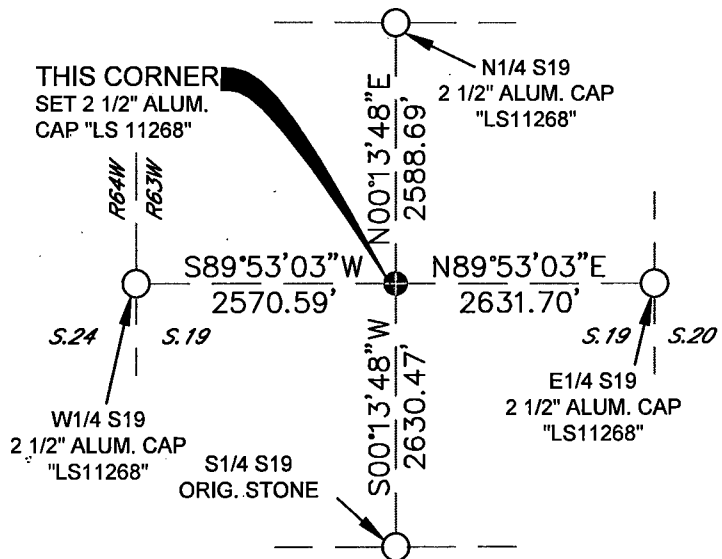
Perpetuation: At computed position, I set a 2 1/2" aluminum cap, marked as shown below. Cap projects 0.2' above ground.



Monument Inscription



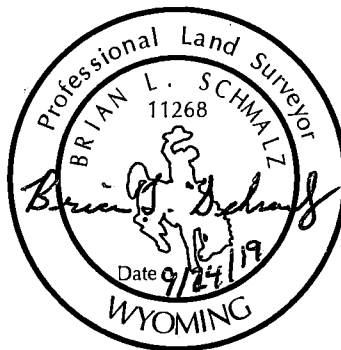
2 1/2 INCH DIAMETER
ALUMINUM CAP



Date of Field Work: 09-16-2019 Office Reference: Book M-1 Pg 9

Cross Index Plat

1	2	3	4	5	6	7	8	9	10	11	12	13	14	15	16	17	18	19	20	21	22	23	24	25	
A																									A
B																									B
C																									C
D																									D
E																									E
F																									F
G																									G
H																									H
I																									I
J																									J
K																									K
L																									L
M																									M
N																									N
O																									O
P																									P
Q																									Q
R																									R
S																									S
T																									T
U																									U
V																									V
W																									W
X																									X
Y																									Y
Z																									Z
1	2	3	4	5	6	7	8	9	10	11	12	13	14	15	16	17	18	19	20	21	22	23	24	25	



BRIAN L. SCHMALZ
PLS 11268

This corner record was prepared by me or under my direction and supervision.



RECP #: 762388
 RECORDED 9/26/2019 AT 1:24 PM BK# 2640 PG# 223
 Debra K. Lee, CLERK OF LARAMIE COUNTY, WY PAGE 1 OF 1